



Selgars.

Reconnect in Nature.

WEDDINGS - BROCHURE

Welcome Home

Selgars Mill is a beautiful converted 19th Century mill house with cottages, set in eight acres of secluded grounds in the Culm Valley in Mid Devon. We like to keep things simple and create a cosy and relaxed environment so that our guests can feel at home.



“We like to think of Selgars as an enchanting place to come together with those we love. It is always with great joy that we host celebrations of love. It is an honour to play a part in the Story that you are writing together.”





Selgars Estate is perfectly suited to couples who want to do something different in a beautiful nature setting. Our approach is to keep things simple and get everyone involved and participating in the experience.

Selgars Mill is a beautiful converted 19th Century mill house with cottages, set in seven acres of secluded grounds in the Culm Valley in Mid Devon.

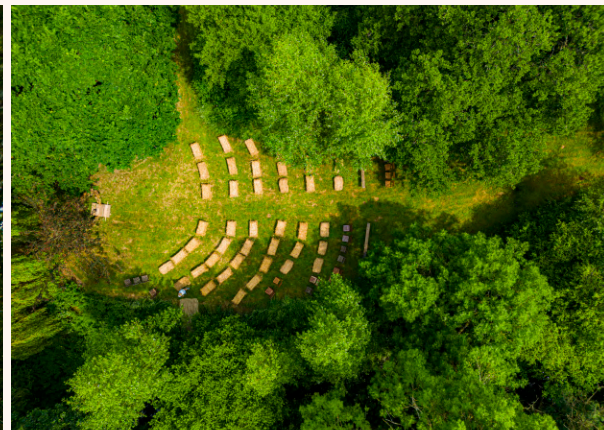
We can host up to 50 guests overnight. Our indoor accommodation has up to 22 beds across the Mill House, Mill Lodge, Pond Lodge and the Waggon. Max capacity if all doubles are shared and all sofa beds used is 30. We also have x10 cabins with two beds each.

During the months of May-early Oct we operate as a retreat venue. During the months of mid-Oct until the end of April Selgars becomes a coliving community.

Selgars is family run estate that is owned by Anton and Morgane who live onsite in one of the cottages. We don't think of Selgars as a hotel, but rather our home that we share with our colivers and guests.







An aerial photograph of Selgars Mill, a large, multi-story stone building with a grey roof and several windows. The mill is situated in a lush green landscape with numerous trees and fields. In the background, rolling hills are visible under a blue sky with scattered clouds. The text "OUR FACILITIES" is overlaid in white, sans-serif capital letters in the center of the image.

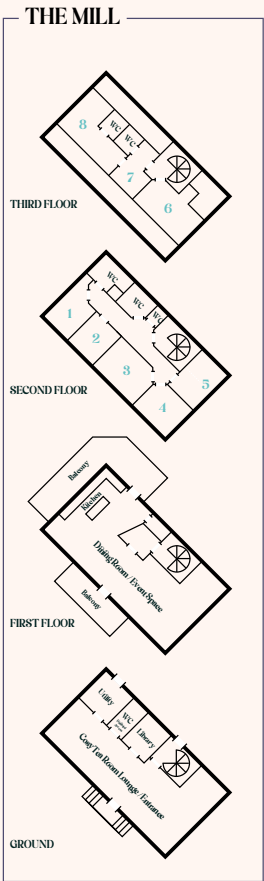
OUR FACILITIES

SELGARS MILL

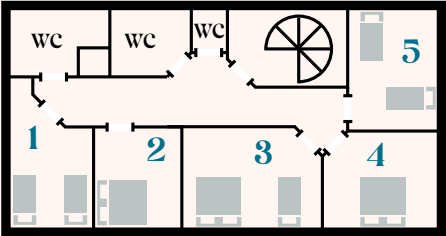
DEVON, EX15 3DA



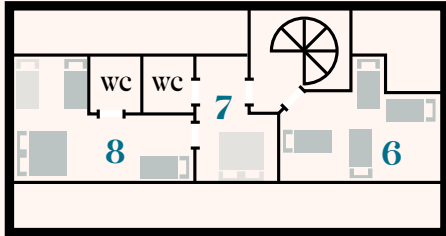
<https://youtu.be/FZgcHbMXoyc>



Second Floor



Third floor



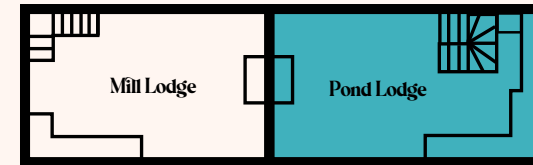
The top floor is ideal for families and groups that are happy to share.



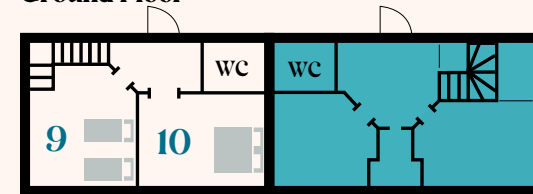


First Floor (Loft)

The Cottages



Ground Floor



9 & 10 Disabled Access
(ground floor)

The Annex



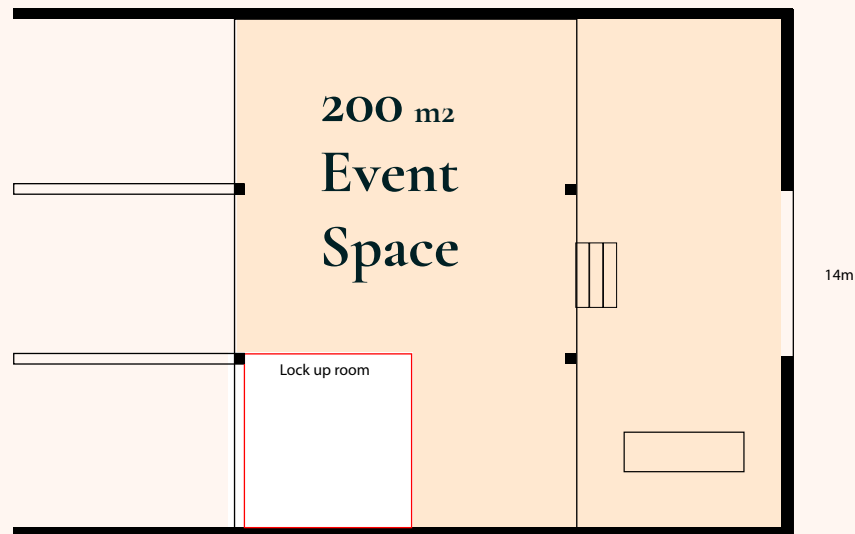
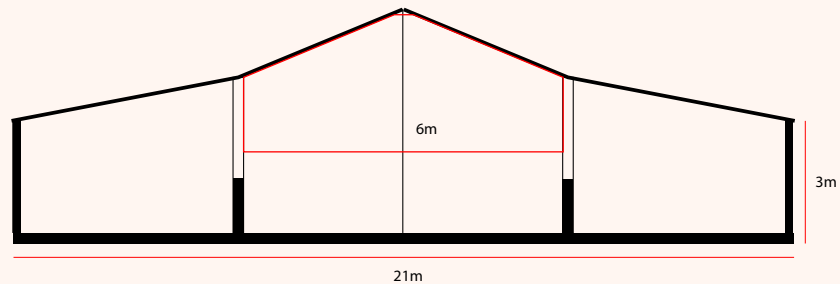
The annex is a self contained cottage with a double bedroom and bathroom upstairs and a kitchen and lounge and working desk downstairs.

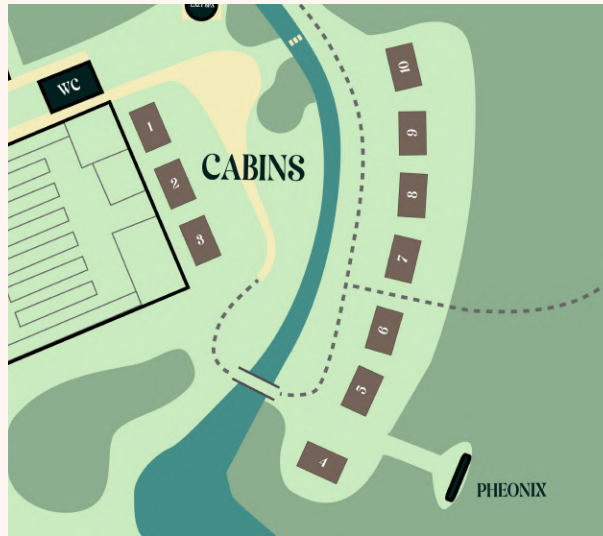
SITE MAP



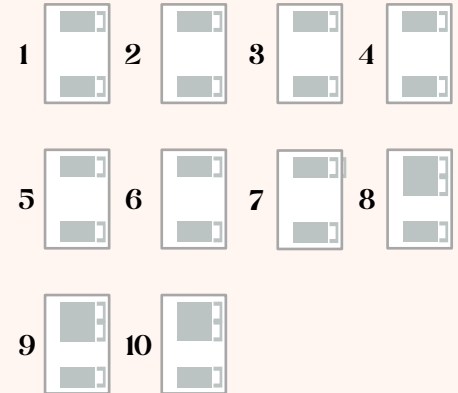
THE BARN

Selgars.



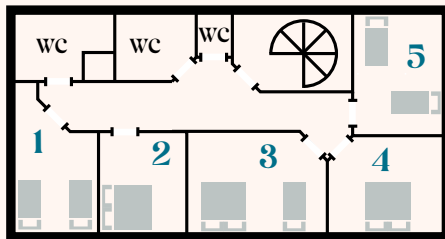


WE HAVE X10 CABINS WITH TWO BEDS IN EACH CABIN. THE CABINS ARE NOT HEATED, BUT WE DO PROVIDE BEDDING, LANTERN, CLOTHES HANGERS, CURTAINS & HOT WATER BOTTLES. WE ASK GUESTS STAYING IN CABINS TO BRING THEIR OWN TOWELS. THERE ARE A COMPOST TOILETS & OUTDOOR SHOWERS NEARBY.

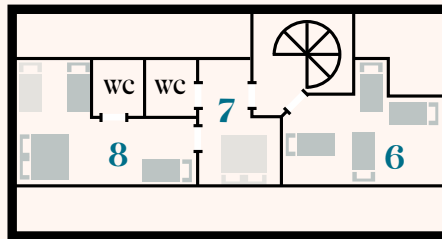


The Mill House

Second Floor



Third floor



The top floor is ideal for families and groups that are happy to share.

Our indoor accommodation has up to 22 beds across the Mill House, Mill Lodge, Pond Lodge, the Waggon and the Annex.

Max capacity if all doubles are shared and sofa beds used is 30.



14 single beds



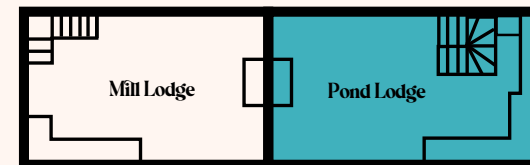
8 double beds



Includes a single and a double sofa bed

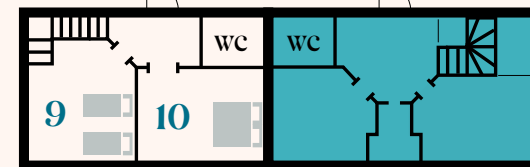
First Floor (Loft)

The Cottages



Pond Lodge is for staff use only

Ground Floor



9 & 10 Disabled Access (ground floor)

11 The Waggon



12 The Annex







Fantastic rail & road connections. A seamless journey by bike as well as train. Ideal for Londoners who don't own cars.

Bv Train

2½ miles from Tiverton Parkway, which is

- 14 minutes from Exeter St Davids
- 45 minutes from Bristol Temple Meads
- 2 hours from London Paddington
- 2¼ hours from Birmingham New Street
- Less than 4 hours from Manchester Piccadilly

Bv Bike

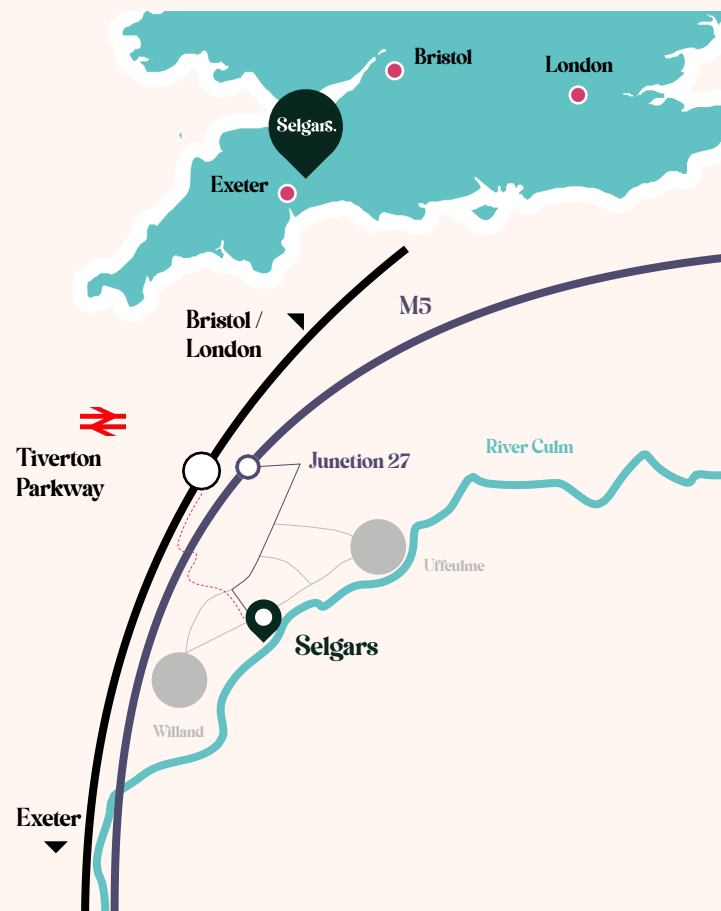
15 minutes from Tiverton Parkway

Bv Bus

Number 1 route from Exeter to Tiverton. 200m from Langlands Business Park bus stop.

Bv Car

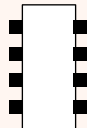
2½ miles from Junction 27 of M5.



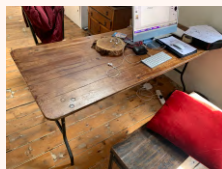
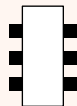








X6 larger folding tables (painted blue)
215x93cm



X8 trestle folding tables
183x76cm



x2 Mill House Folding
120x80cm



Tables x3
199x84cms

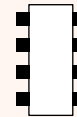
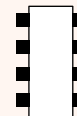


Table
150x86cms



Table & x2 Benches
200x80cm
200x30cm





Item	Quantity
Forks	130
Knives	130
Dinner (dessert spoons)	130
Soup Spoons	80
Tea Spoons (small)	80
small white bowls	84
Dinner plates (white modern)	110
Dinner plates (white ornamental)	28
Sideplates (white, plain)	130
Glass Water jugs 1L	18
Small Glasses (water) - can also be used at the bar	150

Item	Quantity	
Wine/champagne flutes	50	
Crates of assorted glasses	2	Approx 50 mixed glasses in each (approx 100 total)
small white bowls	21	
white medium sized mugs	8	
white small teapots	4	
creamers	3	
white saucers - approx	120	
white small tea/coffee cups -approx	150	
boxed cutlery - dessert spoons	48	
1 extra large cooking pan with lid.	1	
juicer	1	
Metal Cafetierres - Coffee	3	
hot water urns	2	20 litre
metal serving platter - large	12	
metal serving platter - small	12	
Plastic tubs	various	Good for freezing /batch cooking
box of assorted cutlery - mainly spoons		
bag of assorted utensils		